

Let's first take a look at proposals for the Hampton Road site (KN1)

House numbers have reduced from 300 to 180

The reduction protects Grimshaw Hall and, by moving housing away from the road frontage, the visual impact is reduced

Housing densities are 'medium', reducing to 'low' at the lower edge





The Local Wildlife Site, key trees and most hedgerows are protected



Proposals include a new sports venue for Knowle Football Club

A cricket ground is also shown?

It is unclear whether this is a mistake, or possibly part of plans to identify a number of 'Sports Hubs' across the Borough?

Site topography suggests a need for 'cut and fill' engineering works for both the sports ground and the new housing

This is important because it affects scheme cost - a key consideration when assessing viability / deliverability





The Council terms the site 'very accessible'. How realistic is this?

Proposals do not cover car parking at, or public transport to, the facility.

No traffic improvements are deemed necessary at the High St/Ardenvale Rd junction.

The Masterplan proposes a new Green Belt boundary between the housing and sports ground.

This is vital to avoid development 'creep' onto the retained Green Belt / sports area, but is yet to be determined.

Some design considerations are deferred:

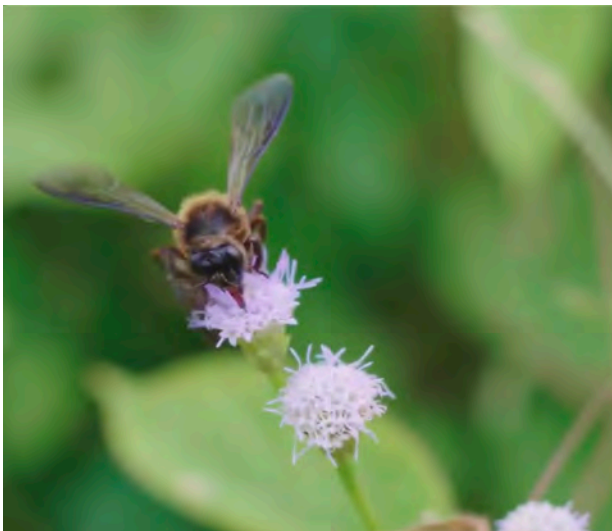
- use of facilities by the public
- impact of floodlights and car parking
- maintaining openness of Green Belt

Now let's turn to proposals for the Arden Triangle site



The number of houses has reduced from 750 to 600

Housing density is graduated - higher close to the village centre (north of site); lower towards the south of the site (Grove Road)



The Local Wildlife Site, key trees and hedgerows are retained



**A new secondary school will be built further back from the village towards the Warwick Road.**

**The existing school will be demolished to be replaced by housing.**

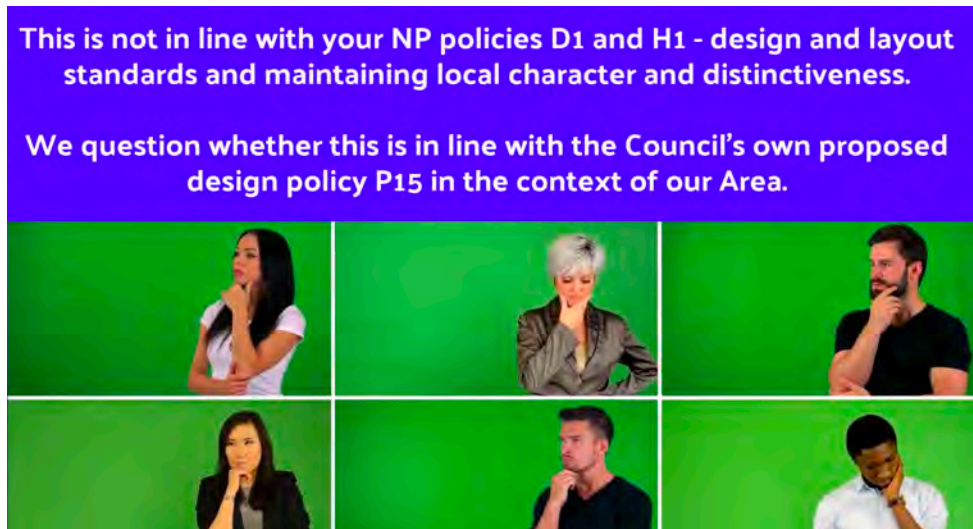
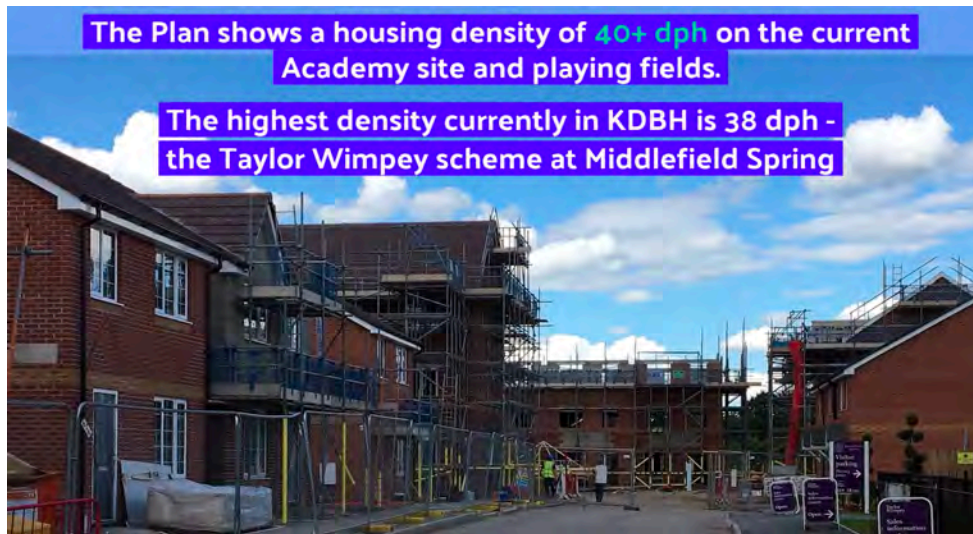


**The new school could potentially offer improved facilities for community use - to be defined**



**A new primary school will be built alongside the new secondary school. It is proposed as a 'through school'.**

**It will have future capacity for two-form entry.**







Your Forum team is still analysing the Council's Infrastructure Delivery Plan. We do know:

1. School access would be from Warwick Rd, relieving congestion on Station Rd
2. No changes deemed necessary to the Warwick Rd / Grove Rd junction



3. The Station Rd/ Warwick Road junction would be redesigned with the addition of traffic lights.

In our 4th and final video, we'll bring all the pieces together to help take an informed view on the 'soundness' of the Council's plans and potential areas for consultation representations.

